



Kubernetes, Istio e Knative: The new cloud stack

Luram Archanjo

Who am I?



- Software Engineer at Sensedia
- MBA in Java projects
- Java and Microservice enthusiastic

Agenda

- Serverless
- Knative & Components
- Why Kubernetes & Istio?
- Demo
- Questions

What is Serverless?

What is Serverless?

Serverless computing, is an execution model where the **cloud provider** is responsible for executing a **piece of code** by dynamically allocating the resources.

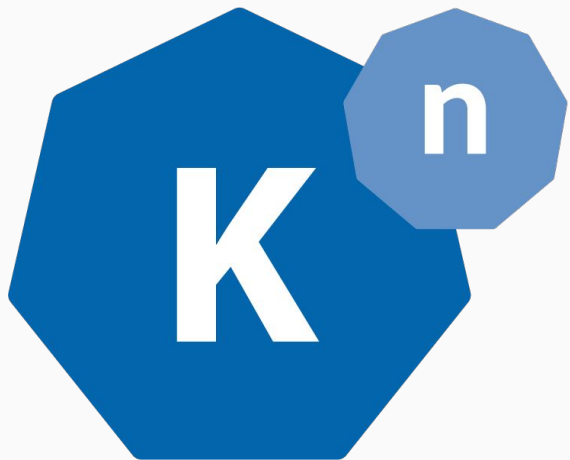
Reduced operational cost

Scalability

Time to market

What is Knative?

What is Knative?



Kubernetes based **open source** building blocks for **serverless**

Knative Components

Knative Components



Knative Components

Serving

How your code receives requests and scales with them:

- Automatic scaling up and down to zero
- Multiple revisions of same function
- Route traffic across revisions

Eventing

How your code is triggered by events:

- Functions consume and publish events
- Multiple event sources available
- Encourages asynchronous

Serving components

How Serving works?

Service

Manages the whole lifecycle of your workload.

Configuration

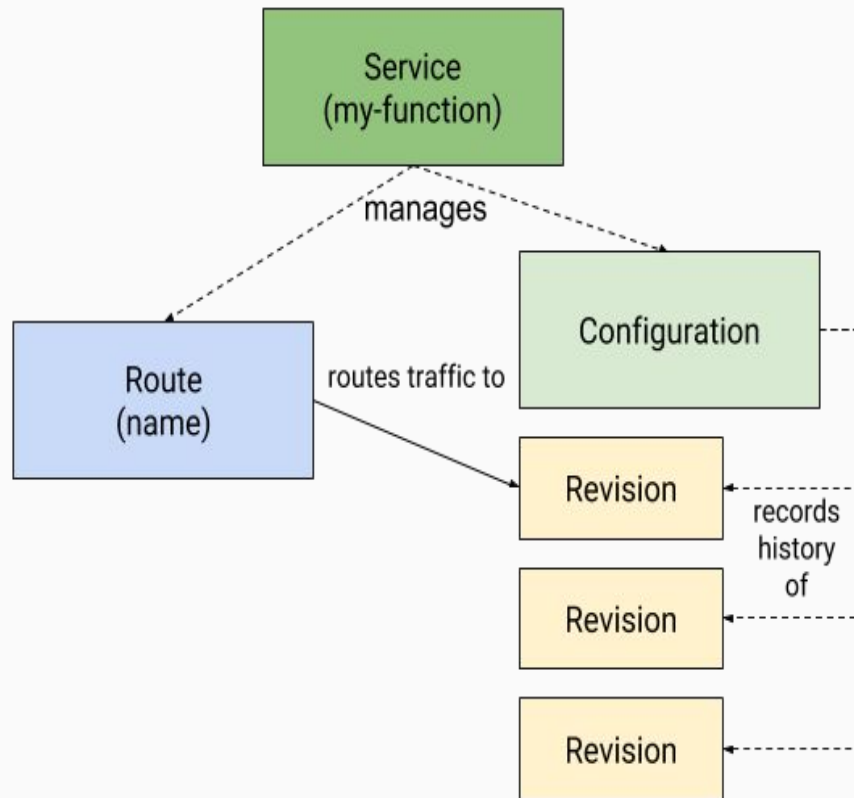
Maintains the current/desired state for your deployment.

Revision

A point-in-time snapshot of code and configuration.

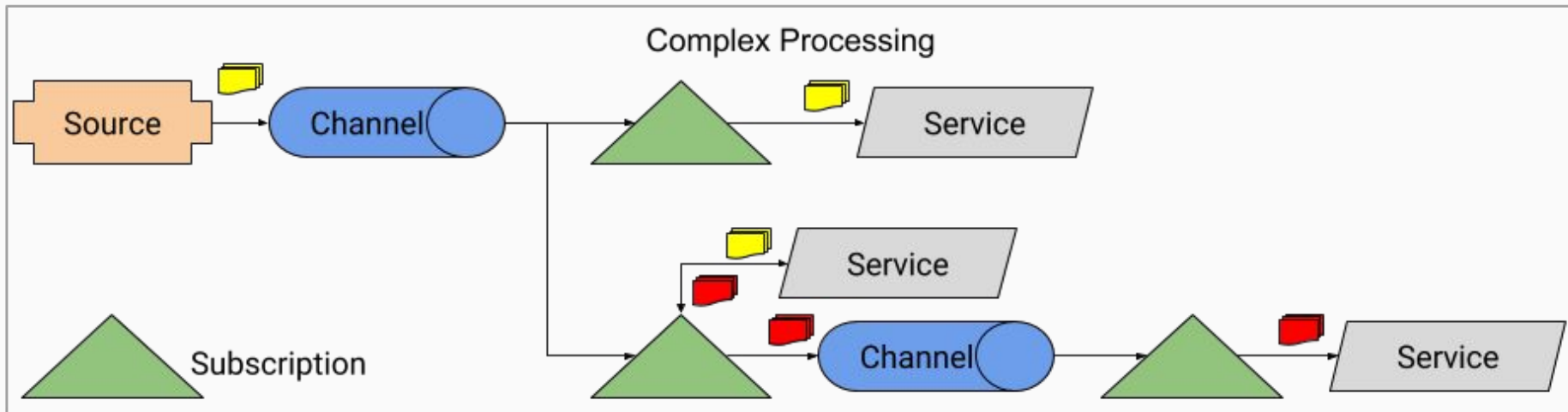
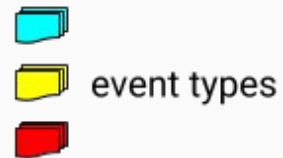
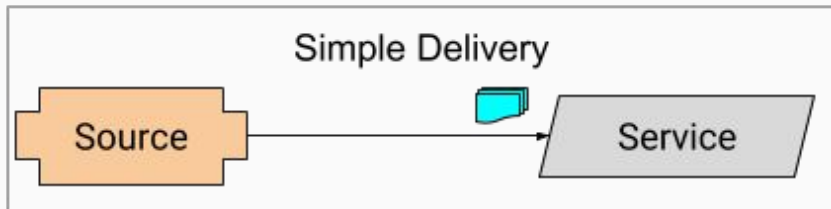
Route

Maps and manage traffics to revisions.



Eventing components

How Eventing works?



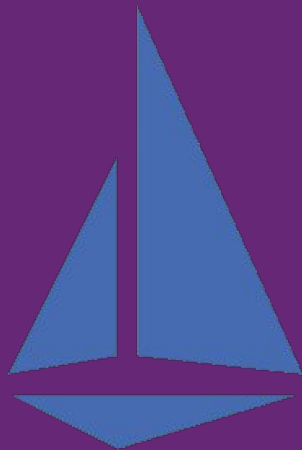
Why Kubernetes & Istio?

Kubernetes



- Horizontal scaling
- Auto-scaling
- Service discovery and Load balancing
- Self-healing

Istio



- Traffic management
 - Traffic Routing
- Security
 - East-West
 - North-South
- Observability
 - Metrics
 - Traces
 - Logs

Demo

Summary

2° Place

Flexibility and No Vendor Lock-in

- Cloud
- Premises
- Third-party data center

1° Place

Build on top of Kubernetes and Istio

- Automatic scaling up and down to zero
- Route traffic across revisions
- Load-balancing

3° Place

Serverless Experience in a Containerized Environment

- Immutability
- High Scalability
- Pipeline Management

Thanks a million!

Questions?



/larchanjo



/luram-archanjo